

The Most Advanced BRS

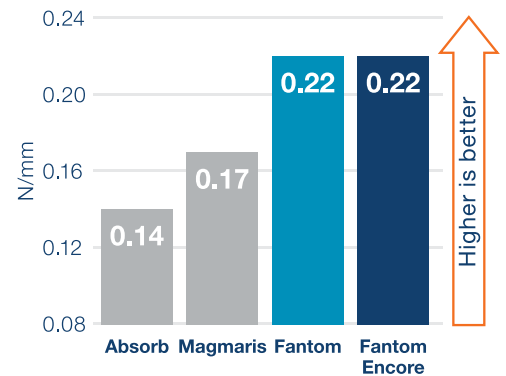
World's Thinnest Bioresorbable Scaffold

Thin struts and best-in-class strength promote vessel healing to maintain patency

Reduced Strut Thickness

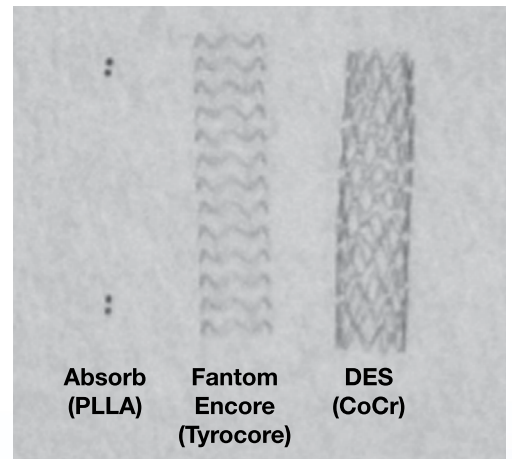
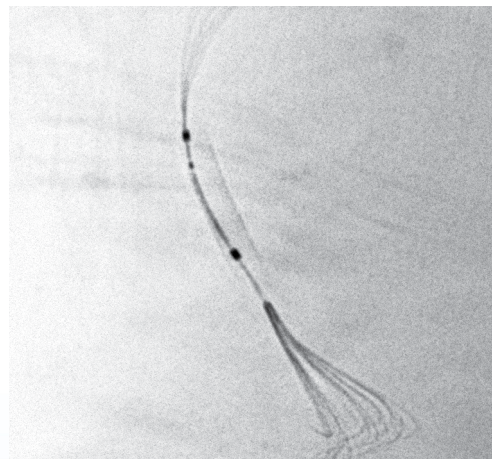
Size	Absorb ¹	Magmaris ¹	Fantom	Fantom Encore
2.5 mm	157 μ m	n/a	125 μ m	95 μ m
3.0 mm	157 μ m	166 μ m	125 μ m	105 μ m
3.5 mm	157 μ m	166 μ m	125 μ m	115 μ m

Best-in-Class Radial Strength²

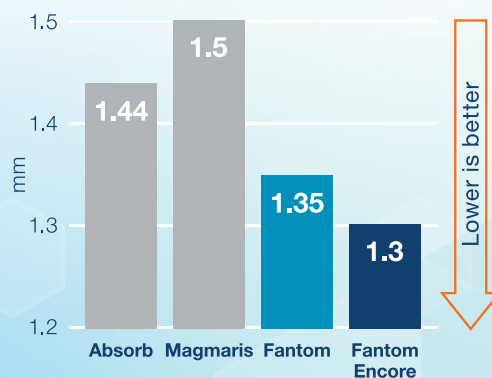


A New Era for BRS Deliverability

Full radiopacity for procedural accuracy



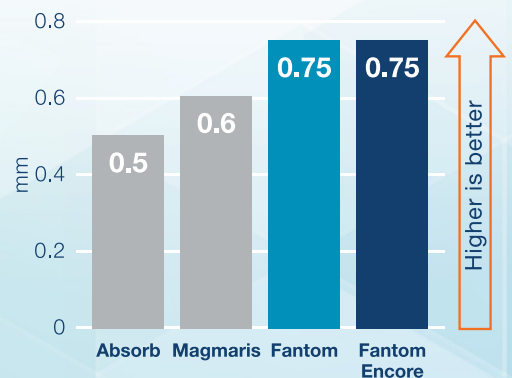
Lower Crossing Profile³



Improved ease-of-use during implant procedure

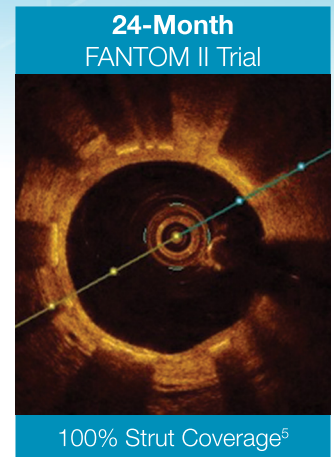
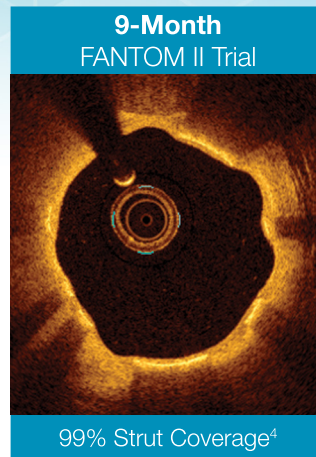
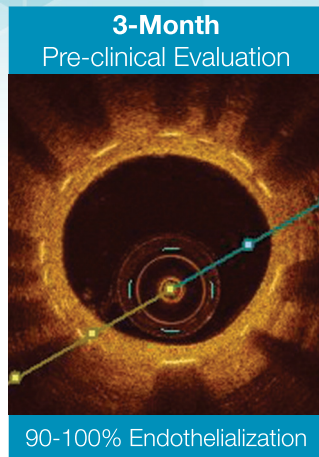
Higher Expansion Tolerance³

Limit of Expansion over Nominal, 3.0 mm Scaffolds



Rapid Vessel Healing, Benign Resorption

Demonstrated
with Fantom BRS



Fantom Encore Performance Characteristics

Characteristic	Fantom Encore	Fantom	Magmaris	Absorb
Scaffold material	Tyrocore	Tyrocore	Magnesium alloy ³	PLLA ³
Drug coating	Sirolimus + Tyrocore	Sirolimus + Tyrocore	Sirolimus + PLLA ³	Sirolimus + PDLLA ³
Strut thickness	2.5 mm, 95 μ m 3.0 mm, 105 μ m 3.5 mm, 115 μ m	125 μ m	166 μ m ¹	157 μ m ¹
Crossing profile	1.3 mm	1.35 mm	1.5 mm ³	1.44 mm ³
Delivery	Single-step inflation	Single-step inflation	Single-step inflation	Multi-step inflation ³
Radial strength²	0.22 N/mm	0.22 N/mm	0.17 N/mm	0.14 N/mm
Recoil²	2.0%	2.0%	6.8%	2.3%
Max expansion over nominal	+0.75 mm, 2.5–3.0 mm diam +0.5 mm, 3.5 mm diam	+0.75 mm, 2.5–3.0 mm diam +0.5 mm, 3.5 mm diam	+0.6 mm ³	+0.5 mm ³
Resorption profile	Vessel uncaged in 1 year Resorption in ~4 years	Vessel uncaged in 1 year Resorption in ~4 years	~40% mass loss at 90 days ~95% mass loss at 1 year ³	Loss of mechanical support in 9 months Resorption in 3 years ³

Fantom Encore Ordering Information

Fantom[®] encore Sirolimus-Eluting Bioresorbable Coronary Scaffold System

	12 mm	18 mm	24 mm	36 mm	48 mm	60 mm
2.5 mm	910025-12	910025-18	910025-24	910025-36	910025-48	910025-60
3.0 mm	910030-12	910030-18	910030-24	910030-36	910030-48	910030-60
3.5 mm	910035-12	910035-18	910035-24	910035-36	910035-48	910035-60

References

1. Ormiston, J. New BRS Platforms. Presented EBC Rotterdam 2016. Foin, N. Biomechanical Assessment of Bioresorbable Devices. Presented CRT 2017.
2. 3.0 mm diameter scaffolds. Tests performed by and data on file at REVA Medical.
3. Manufacturer reported data on file at REVA Medical.
4. Abizaid, A. New 24-month data from the FANTOM II clinical trial. EuroPCR 2018.
5. Abizaid, A. The FANTOM II study, first report for the 12-month clinical outcomes of the Fantom sirolimus-eluting bioresorbable scaffold. EuroPCR 2018.

REVA Medical European Authorized Representative: REVA Medical GmbH, Stichlingstrasse 1, 60327 Frankfurt am Main, Germany.

Customer Service: TEL: +31 73 303 2559, FAX: +31 73 369 0551, EMAIL: revamedical@healthlinkeurope.com.

Fantom and Fantom Encore have CE Mark only. Fantom and Fantom Encore are available in select countries that accept CE Mark.

Fantom and Fantom Encore are not available in the U.S. or countries that do not accept CE Mark. Fantom Encore, Fantom, and Tyrocore are trademarks of REVA Medical, LLC. REVA Medical, LLC, 5751 Copley Drive, San Diego, CA, 92111, United States of America.

Absorb is a trademark of Abbott. Magmaris is a trademark of Biotronik.